



**GIBRALTAR STOCKHOLDINGS LTD**

*Agents for*  
Toyota Motor Europe NV/SA

**TGS**  
**MORE**  
**THAN**  
**JUST**  
**4x4s**  
**25 YEARS**

# VEHICLE INSURANCE



In partnership with:

 **clements**  
WORLDWIDE



## WHY VEHICLE INSURANCE?

International organisations face unique challenges when operating around the world, sourcing adequate insurance to protect their fleets should not have to be one of them. The TGS Fleet Insurance Program offers the broadest levels of global protection for your vehicles, including high risk areas where most providers do not.



## TGS/CLEMENTS WORLDWIDE PARTNERSHIP

TGS strives to provide the highest level of products and services to our customers. Part of meeting this goal is partnering with industry leaders to offer cutting edge solutions to the unique problems faced by aid and development organisations. To this end, TGS has formed a strategic partnership with Clements Worldwide, a leading international insurance brokerage firm.



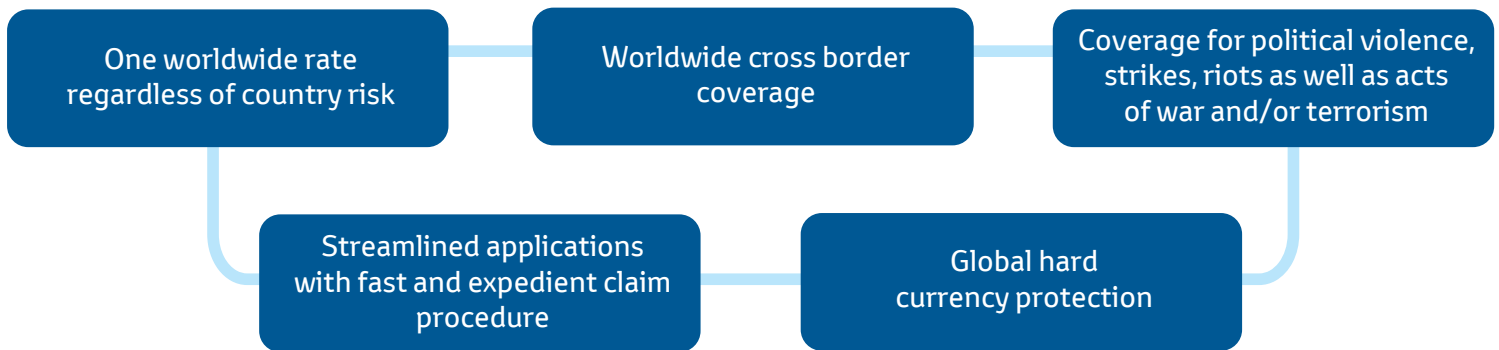
*Agents for*  
Toyota Motor Europe NV/SA



In partnership with:



# MAIN PROGRAM BENEFITS



# COVERAGE OPTIONS



**PHYSICAL DAMAGE** - Protection for damage to your vehicle



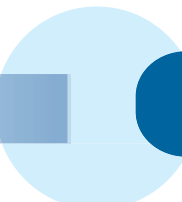
**EXCESS LIABILITY** - Worldwide coverage for third-party related damages up to \$1,000,000



**POLITICAL VIOLENCE** - Coverage for physical damage to vehicle occurring as a result of war, terrorism, strikes, riots or civil unrest



**PERSONAL ACCIDENT** - Coverage for drivers and passengers who sustain bodily injury or death as a result of an accident



**DUTY COVERAGE** - Insurance to cover the costs of duty taxes to replace a vehicle

# GLOBAL VS LOCAL POLICIES

## Why Global Insurance?

On most occasions local coverage is inadequate to meet the needs of international organisations. Here are some key factors to consider when selecting your insurance provider:



# WHY PURCHASE YOUR INSURANCE VIA TGS?

TGS has negotiated preferential rates and terms only available to TGS clients via its partnership with Clements Worldwide.

## **%** DISCOUNTS

Your overall premium will be discounted if you decide to purchase any of the additional accessories/services listed below which TGS may also provide:

- ANTI-THEFT ACCESSORIES •
- DRIVER TRAINING •
- TERRAMAR FLEET MANAGEMENT / TRACKING SERVICES •

**CONTACT OUR TEAM TO FIND OUT MORE!**



# TESTIMONIALS

## ***"Prompt and Efficient Service"***

Once again, many thanks and much appreciation for your prompt and efficient service. We are delighted to have so quickly received our insurance claim payment, and are especially impressed by how smoothly and expeditiously you made all of this happen. This certainly has reversed our stereotype of the slow and bureaucratic insurance sector. Many thanks again for your exceptional assistance and efforts on our behalf. We will continue to be loyal and grateful Clements clients!

**U.S. Embassy employee - Japan**

## ***"I Will Never Live Overseas Without Clements Insurance"***

Having worked and lived overseas for more than 10 years, in 7 countries we have always relied on Clements to insure our belongings. During our last move, the unthinkable happened: the container carrying everything we owned was lost at sea.

Clements was responsive, professional and supportive throughout the experience. Once it was clear that the container was lost Clements processed the claim quickly.

**U.S.A.I.D. Regional Water Advisor - Egypt**

     [www.toyota-gib.com](http://www.toyota-gib.com)




# CONTACT US

To obtain a quote or for additional information contact:



**TGS**  
**MORE**  
**THAN**  
**JUST**  
**4x4s**  
**25 YEARS**


**Mary Parker**

 +350 200 59155

 [mary.parker@toyota-gib.com](mailto:mary.parker@toyota-gib.com)



**Dan Edmonds**

 +1-202-872-0060

 [dedmonds@clements.com](mailto:dedmonds@clements.com)

**Edward Kerrick**

 +44 2073 974963

 [ekerrick@clements.com](mailto:ekerrick@clements.com)